

2020

Resume / Portfolio



DIATSA

Projects

Desarrollo Ingeniería y Agregados Técnicos

S.A. de C.V.

1/1/2020

Table of Contents

Overview	2
Fiscal Data	2
General Information	2
Affiliations.....	2
Organization	3
Quality Policy.....	4
Services	4
Design of Industrial Infrastructure	4
Construction of Industrial Infrastructure	4
Maintenance of Industrial Infrastructure	5
Projects	5
Customers	8
Active	8
Others	8
Mission	10
Vision	10
Contact.....	10

Overview

Fiscal Data

Name of the Company:	DESARROLLO INGENIERIA Y AGREGADOS TECNICOS, S. A. DE C. V.
Main Offices Address:	Isla Andamán # 3074 Col. Jardines de la Cruz Guadalajara, Jalisco. C. P. 44950
Workshop Address:	Isla Socorro # 3325 Col. Villa Guerrero Guadalajara, Jalisco. C. P. 44950
Phone Numbers:	(33) 3645 0921, (33) 3124 8449 FAX: (33) 3124 8450
Year of Foundation:	July 25th of 2003
Notary:	Lic. Arturo Zamora Jiménez (Public Notary N° 16)

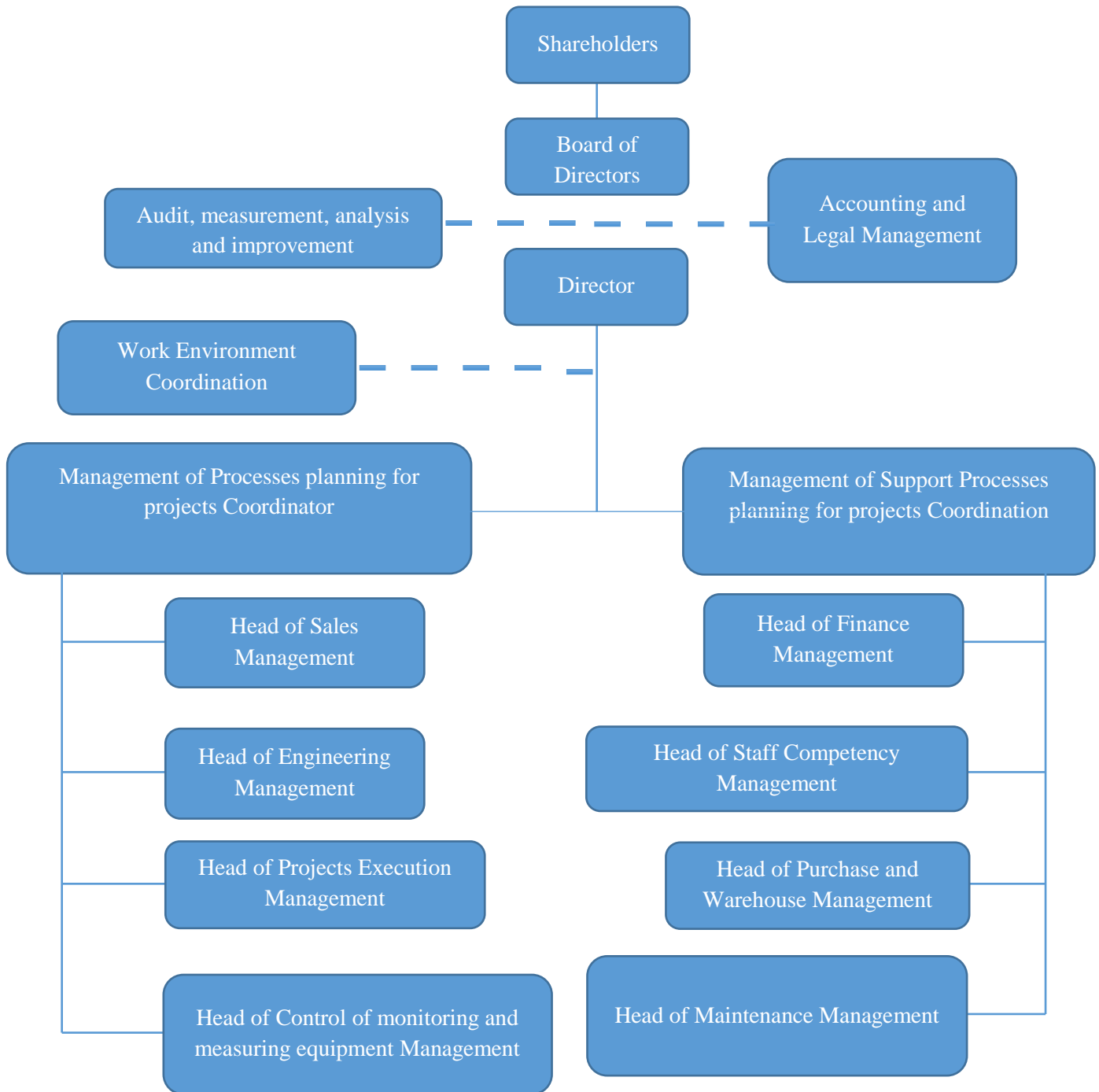
General Information

R.F.C.:	DIA-030725-TI9
I.M.S.S.:	R12 54545 10 3
INFONAVIT:	R12 54545 10 3
Number of Employees:	The basic workforce is 50 people, ranging at times up to 150 people according to the size of ongoing projects

Affiliations

C.I.M.E.G.:	Member Number 4089
SECRETARY OF FINANCE:	318759-6
Guadalajara Chamber of Commerce:	96980

Organization



Quality Policy

At DIATSA we are dedicated to design, construction and maintenance of industrial infrastructure for the food industry.

We are committed to

1. Continuously meet the requirements:
 - of our clients,
 - legal,
 - regulatory, and
 - the requirements which DIATSA consider appropriated, as well as,
2. Continually improve the effectiveness of our quality management system based on ISO 9001 standard.

Services

Design of Industrial Infrastructure

Basic Engineering

- Flow chart engineering.
- List of equipment.
- Lay-Outs.
- Equipment specification.

Detailed Engineering

- Electric Calculation Reports.
- Mechanical Calculation Reports.
- Autocad design (2D & 3D, Electrics, Mechanics, Civil, Instrumentation and Control).

Machine and Equipment Design

- Detailed plans for customer approval.
- Exploded view drawings for factory manufacture.

Construction of Industrial Infrastructure

Equipment manufacturing in Workshop

- Hoppers.
- Sifters.
- Tanks from 1,000 to 200,000 L., For tanks greater than this range, on-site assembly is recommended.
- Agitators.
- Roller mills that can be used for different products (e.g. oils, beans, agave, etc.).
- Conveyors range from helical conveyors, or belt bucket elevators, to conveyor belts with pushers, and more.
- Heat interchangers.
- Barometric condensers.
- Industrial Cyclones.
- Fermenters.
- Batch reactors.

On Site Installations and Assemblies

- Assembly of platforms and structures.
- Assembly of process equipment. (Reactors, heat interchangers, dryers, etc.)
- Assembly of service equipment. (Cooling towers, boilers, air compressors, chillers, etc.)
- Installation of process piping.
- Installation of service piping. (Vapor, cooling water, compressed air)
- Installation of electric power.
- Installation of electric lighting.
- Equipment testing and start-up.

Others

- Turnkey Project Development.
- Personnel Outsourcing Program.
- Project Management.

Maintenance of Industrial Infrastructure

Preventive and Corrective Maintenance

- Maintenance to all of our services.
- Maintenance to your facilities and equipment.

Projects

Participation in infrastructure **Construction** for technology leader and owner, in a project for assembling several distillation modules of tequila with a production capacity of 60,000, 30,000, 20,000 and 15,000 lts./day, including the installation of mechanical and electrical services for the implementation of the tequila distillation column. Participation in infrastructure **Construction** in building infrastructure for recovery of alcohols in fermentation and CO₂ washing tanks for a 100,000 lts./day plant.

Construction and mounting of mechanical infrastructure as mixers for soap, pots, soap cutters, mounting of five production lines for toilet and laundry soap in coordination with the customer and the company MAZZONI.

Design and **Construction** of infrastructure for storage tequila, with capacities from 220,000 lts., 500,000 lts., 1,400,000 lts., with stainless steel T-304. Also were considered accessories, process piping, services and aerial walkways, always meeting TIG (GTAW) processes as well as ASME and API codes and norms employing qualified welders. **Design** and **Construction** of infrastructure to deliver services steam, condensate, mains water, ice water and return, wort, vinasse, tequila, electrical connection, programming control system service and resection of finished product distillation column with production capacity of 30,000 lts./day. **Design** and **Construction** of agave oven doors for guaranteeing zero vapor leaks and easy opening. **Design** and **Construction** of infrastructure for the discoloration of tequila project, with capacity of 25,000 lts. **Construction** of in plant infrastructure for the production of yellow corn derivatives, with a 25% increase in capacity. Project named as "B52" during 2019.

Construction of electrical infrastructure for deep well pump with 440 volts reduced voltage starter and local control, also installation of four (4) 400 watts lamps with 220 VAC at 7 feet tall pole. **Construction** of electrical

infrastructure replacing self-supported Federal Pacific (f Power) distribution board at a substation plant for tequila.

Construction of infrastructure for capacity expansion project in the milk storage area which consisted of the removal of 2 low capacity silos and **Construction** of 2 new silos with capacity of 125,000 lts., considering sanitary pipes and fittings such as 4 Port Alfa-Laval valves.

Construction of infrastructure for liquefied processes with Fristan brand supplies. **Construction** of infrastructure for 70S-5 machine installation project, considering service pipes and accessories in general. **Construction** of infrastructure for the new TETRA PACK pasteurizer working together with the company ALFA LAVAL, including balance tub pipes and process service. **Construction** of infrastructure for the project to raw milk silo with a capacity of 150,000 lts. including all accessories process connection. **Design** and **Construction** of infrastructure for secure downloading project, through air corridors to ship to discharge pipes. **Construction** of infrastructure for Fristan project, which considered various sections conveyor making for the packaging area as plant needs.

Construction of infrastructure for the proposed overhaul and modification in plant grains, for the installation of new machinery, **designing** and **building** conveyors, chutes, ducts and equipment rearrangement according to requirement of the project.

Construction of infrastructure for OMEGA plant I and II, making process piping and overall service following indications of project plan leader.

Design and **construction** of infrastructure for OMEGA III and IV plant project, taking into consideration structures, equipment assembly by technology owners, mechanics and service process piping as well as the startup and commissioning of this plant for product (Isadora) in coordination with the client and SELO, TOYO and LAGARDE companies.

Design and Construction of infrastructure for GAMMA plant project, for the following; (Utilities, automation, kitchen modules, metallic structures). These were built totally by us as well as the start of operations of this plant for the (Isadora) product, in coordination with the client.

Construction of infrastructure for the project consisting of the assembly of DUOCLEANERS for cleaning paper machine number II. Conducts corrective and preventive **maintenance** on the whole plant. Manufacture of machined mechanical parts, required for corrective **maintenance** of the plant.

Maintenance of production equipment as hydraulic, pneumatic, and mechanical stamping, importing parts from origin countries as required by the metal mechanical industry. **Design** and **construction** of infrastructure for the installation of two overhead cranes in reception area for steel tools and plastic box factory.

Construction of infrastructure for the project of ejectors and cooling chambers at high vacuum with food grade. **Construction** of infrastructure for the project of fryers line with a capacity of 2,500 lts. of oil considering power, utility pipes, control and peripheral equipment.

Construction of infrastructure for the structural design for installation of the new non-returnable line of beer in conjunction with KHS company. **Construction** of infrastructure for the project CO2 washer 4,000 lb / HR as well as the carbon dioxide system, CIP and washer tower considering pipes and fittings in accordance to plant engineering. **Construction** of infrastructure for CCM mounting project, consisting of 30 KVA transformers and power supply to pumps and fans for Casta beer plant at GDL project. **Design** and **construction** of infrastructure for the relocation of service lines such as; process water, chilled water supply and return air, CIP system and air drainage because they interfered in the modernization and construction of house brews called "LIBRANZAS STEINCKER". Supply of competent personnel to perform routine **maintenance** to the plant for 180.000 hours, fulfilling the needs of the requested staff competence. **Construction** of infrastructure for the project of decommissioning of the whole obsolete transportation system as well as the installation of the new conveyor system MAY MILO, including disassembly and assembly of equipment and SCFM ROOTS blower 50hp, vibrating discharger, locks, rotary valves, manifold powder hopper depressurization worm conveyor and hopper scale. **Design** and **Construction** of infrastructure for the project platform and lifeline in the cargo area of filter sludge and yeast sales. **Construction** of infrastructure for the project water treatment by osmosis, project named SAAM'S for which the capacity was increased, considering complete piping installation in internal path plant in 10 ", 8", 6 ", 4", 2 "and 1" T-304 stainless steel and pipe fittings and equipment. **Construction** of infrastructure for the GDL 300 Aldox project which consisted on bringing services to ALFA LAVAL equipment and ammonia trap with carbon steel pipes C-80 10 "and 8" diameter for ammonia, pipes DN80 - DN25 in stainless steel T- 304 for deaerated water and other services based on project scope. **Construction** of infrastructure for the project 75 tons CO2 horizontal container, considering installation of high pressure pipes for interconnecting the current process according to project needs.

Construction of infrastructure for Interlocks Project at Atequiza, Jal., considering electrical and mechanical piping for the project, as well as installation oxygen sensors, PSL, and INTERLOCKS controlled from CCM to 10 teams located in different areas of floor plan, all with explosion proof material under engineering plant. **Design** and **Construction** of infrastructure for the NCP III project considering manufacturing and growth of TOLUENE storage tanks with capacities from 20,000 to 30,000 lts. in full stainless steel T-316 with accessories, process piping and services, complying with TIG (GTAW) as well as ASME, API norms, employing certified welders, electrical piping and CCM connection (SQUARE D brand) for column sensors, and peripheral PLC boards located in various areas of the plant, all used material was explosion proof .

Maintenance work at oxygen and nitrogen plant, which consisted of removal and construction of new interchanger for the After Cooler compressor system, also connecting service pipe of 14 "and 6" diameter using carbon steel schedule 40, seamless and ready for radiographic inspection.

Customers

Active

Almex.
Productos Verde Valle, S.A. de C.V.
Praxair.
Tomsa Destil.
Casa Cuervo, S.A. de C.V.

Others

Sigma.
Hershey´s México, S.A. de C.V.
Distribuidora de la Rosa, S.A. de C.V.
Sesajal, S.A. de C.V.
Cervecería Cuauhtémoc Moctezuma Guadalajara.
Ecofoods.
Omnilife Manufactura S.A. de C.V.
Grupo Vida.
Construplan / Grupo Construcciones Planificadas S.A. de C.V.
Alpezzi Chocolate, S.A. de C.V.
Lala Guadalajara, S.A. de C.V.
Nippon Shokuhin Mexicana, S.A. de C.V.
Nh Foods Mexicana S.A. de C.V.
Cytex De México.
Gustinos.
Naturalabs.
Tajín.
Boehringer Ingekhaim Vetmedica, S.A. de C.V.
Compañía Harinera del Parayas, S.A. de C.V.
Crown Envases México, S.A. de C.V.
Arca continental Coca Cola.
Vidriera Guadalajara, S.A. de C.V.
Manantiales Peñafiel, S.A. de C.V.
Pronua, S.A. de C.V.
Viscofan.
Treofan.
Urrea Herramientas, S.A. de C.V.
Jabones Mexicanos, S.A. de C.V.
Empaques Modernos de Guadalajara, S.A. de C.V.
Bimbo de Occidente.
Plásticos Iris Agua, S.A. de C.V.
Industrializadora de Oleofinos, S.A. de C.V.
Allen de Occidente S.A. de C.V.
Emerson Climate Technologies México.

Servicios Estrella Azul de Occidente S.A. de C.V.

Ambiderm.

Chedraui.

Etanable.

Sinci.

Automatik.

Cuproza.

Heinz.

Hydro Chem Brazil.

Icegauss.

Icovi.

Jypesa.

King Wash.

Mexichem.

Silostysa.

Zf Sachs.

Qodsa.

Pympsa.

Pisa Farmacéutica.

Imsa.

Idea.

Envases Universales.

Embotelladora Aga.

Danisco.

Danfoss Industries.

Atlatec.

Pounce Electronics.

Cemex.

Assa Abloy.

Grupo Peñafiel.

Cepaeza.

Durr de México.

Heltec.

Nestle.

Mission

Our mission at DIATSA is: At DIATSA we are dedicated to resolve our customers' requirements in the areas of: **Design, construction** and **maintenance** of industrial infrastructure mainly for the food industry.

Vision

Our vision at DIATSA is: At DIATSA we are determined to be a sustainable company with a global management system with an endless continuous improvement process, which will be adapted to global changes as well as to the changing and demanding stakeholder requirements, inspired and guided by our Lord.

Contact

Sincerely:

J. Efrén Guzmán de Ávila
Director